

## Fact Sheet

### 'Toa'

*(Populus deltoides x P. nigra) x P. yunnanensis*  
 NZ 5007



'Toa' is a NZ-bred PVR-licensed tree that was first released commercially in 1996. It originates from a 1982 cross between a *P. x euramericana* hybrid and the Chinese balsam poplar *P. yunnanensis*.

### Characteristics

'Toa' leaves are round with a straight to shallowly heart-shaped leaf base. The leaves are dark green on the upper surface and grey-green below, with a pink tinge on the midrib. Similar to 'Kawa', the leaves remain on the tree until early winter, much longer than the *P. x euramericana* hybrids due to the *P. yunnanensis* parentage.

'Toa' has a narrow-medium sized crown, and is heavier in the trunk than 'Kawa'. 'Toa' is female.

### Uses

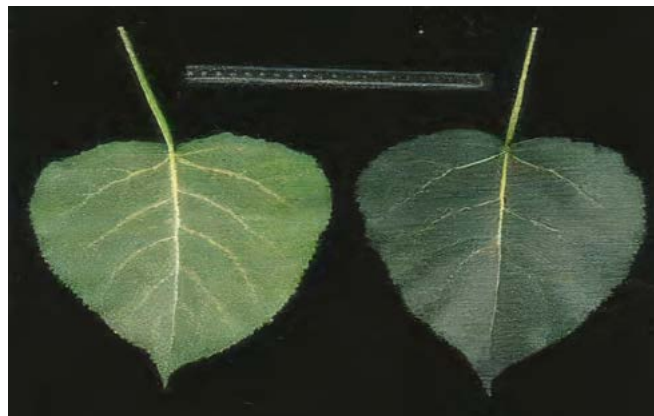
'Toa' is suited to moist and fertile sites, even more so than the variety 'Kawa', however it will withstand some wind. 'Toa' is recommended for soil conservation in wet sheltered valley systems.

'Toa' is typically rust resistant, and the balsam parentage confers good possum resistance.

### Performance

At a Fan Nelder trial on a moist but exposed site in Manawatu (ann. rainfall 1200 mm), age 7 'Toa' had an average height of 10.2 m and diameter (dbh) of 17 cm for trees spaced at 4 - 11 m apart. However this trial had been badly damaged by stock.

At a spacing trial near Wairoa (ann. rainfall 1250 mm), age 9 'Toa' had an average height of 17.8 m, and a dbh of 34 cm for trees spaced from 5 x 5 m - 10 x 10 m.



DISCLAIMER: While every effort has been made to ensure the information in this fact sheet is accurate, The New Zealand Poplar and Willow Research Trust (NZPWRT) and New Zealand Institute for Plant and Food Research Limited (Plant & Food Research) cannot guarantee its accuracy and does not give any assurance as to the suitability of any such information for any particular use. NZPWRT and Plant & Food Research will not be liable in any way for any loss, damages or costs which may be incurred by any person in relation to this information.